

Mepilex® Border Flex



When to change the dressing according to saturation

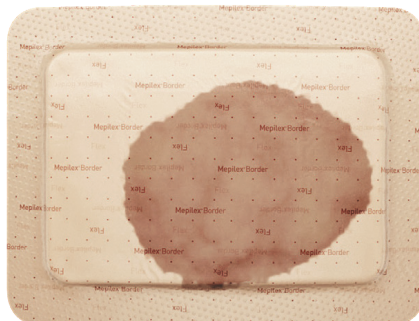
The ideal wound dressing is designed to minimise the level of tissue disturbance. Too frequent dressing changes can lead to reduced temperature of the wound bed and disturbance to healing cells¹. The added benefit to an institution is a reduction in spend due to dressings being changed too often.

Saturation Levels:



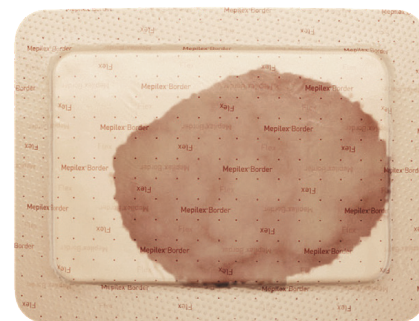
0

Strikethrough at 0 edges.
Can keep in place.



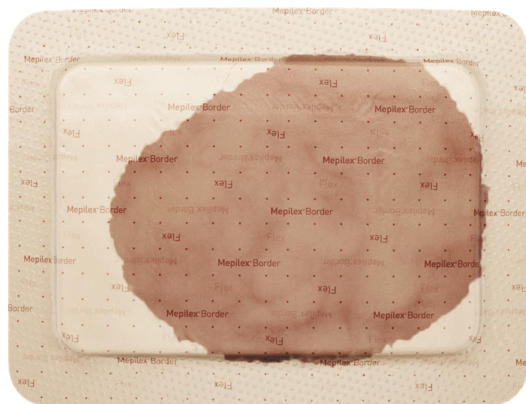
1

Strikethrough at 1 edge.
Can keep in place.



2

Strikethrough at 2 edges.
Can keep in place.



3

The dressing is saturated
when the strikethrough
has reached **3 edges.**



Mepilex Border Flex
offers up to a seven-day wear time².

Mepilex Border Flex is designed for superior^{3,4} fluid retention. **Initial strikethrough does not necessarily mean that the dressing is saturated.** The dressing was constructed to make the strikethrough visible so that you can determine when it is time to change it.

Mepilex Border Flex may be left in place for up to seven days depending on the condition of wound and surrounding skin.

All images are stylised for ease of visualisation. Exudate Progress Monitor dots do not change appearance with/without exudate.

Disclaimer: The information provided herein is not to be construed as the practice of medicine or substituted for the independent medical judgment of a patient's treating healthcare professional. Each patient's healthcare professional shall remain solely responsible for assessing the severity of patient wounds, determining the appropriate treatment, and managing treatment of the wound.

References: 1. Rippon M. et al. Taking the trauma out of wound care: the importance of undisturbed healing. Journal of Wound Care Vol 21, No 8, August 2012. 2. Nelson, D. Better Outcomes for Skin Tears with New 5 Layer Bordered Foam Dressings. Poster Presentation at WOCN Annual Meeting, Philadelphia, PA. 2018. 3. Mepilex Border Flex – Fluid handling capacity. Report no. PD-527642_01. Data on file. 4. Mepilex Border Flex—Absorption and dispersion tests on inclined plane, viscous test solution. Report no. PD-528871_02. Data on file.

www.molnlycke.com.au | www.molnlycke.co.nz

Mölnlycke Health Care, 12 Narabang Way, Level 4, Belrose, NSW, 2085. Phone 1800 005 231. New Zealand Orders & Enquiries 0800 005 231, www.molnlycke.co.nz. The Mölnlycke, Mepilex, Safetac trademarks, names and logos are registered globally to one or more of the Mölnlycke Health Care Group of Companies. ©2019 Mölnlycke Health Care. All rights reserved. AUWC_270608_V1

