

DEVILBISS SUCTION UNIT

Cleaning and Trouble Shooting Guide



 **DeVilbiss®**
HEALTHCARE

 **EBOS**
HEALTHCARE

ESSENTIAL TO HEALTH

Cleaning Instructions

PREPARATION

1. Shut off unit using power switch and allow vacuum to drop. Disconnect power source from the DC input receptacle on the unit.
2. Disconnect tubing and remove container from holder.
3. Carefully remove lid and empty contents.

NOTE: Container should be emptied and cleaned after each use.

WARNING:

To prevent possible risk of infection from contaminated cleaning/disinfection solutions, always prepare fresh solution for each cleaning cycle and discard solution after each use.

DISPOSABLE COLLECTION CONTAINER WITH INTERNAL FILTER CARTRIDGE

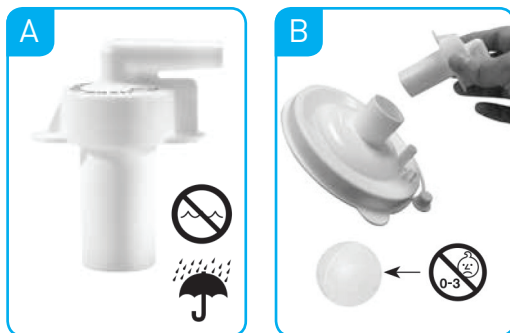
The disposable collection container and lid are meant for single-patient use.

1. Remove filter cartridge and 4-3/8" tubing and set aside.

NOTE- Filter MUST NOT get wet. The filter material cannot be removed from the elbow (figure A).

WARNING:

Do not remove float ball from lid. If removed, float ball may pose a choking hazard (figure B).



2. Wash container, lid and splash guard in warm water/dishwashing solution. Rinse with clean, warm water.
3. Soak in 1 part vinegar (> = 5% acetic acid concentration) to 3 parts water (131°F-149°F/55°C-65°C) solution for 60 minutes. Rinse with clean, warm water and air dry.



NOTE:

- The disassembled container may also be washed in a dishwasher, top shelf only, using a cycle with a water temperature between 131°F-149°F/55°C-65°C.
- The disposable collection container and lid are meant for single-patient use.

Maintenance

Inspect suction tubing and container for leaks, cracks, etc. before each use.

DANGER:

Electric shock hazard. Do not attempt to open or remove cabinet, there are no user-serviceable internal components. If service is required, return unit to a qualified DeVilbiss Healthcare provider or an authorized service center. Opening or tampering with the unit will void warranty.

CHANGING FILTER CARTRIDGE (SINGLE-PATIENT USE) DISPOSABLE CONTAINER

1. Change filter cartridge if overflow occurs or every two months, whichever comes first.
2. Turn unit "off".
3. Remove filter cartridge and 4-3/8" tubing.
4. Install new cartridge and tubing..

NOTE:

- Do not substitute any other material for this filter cartridge. Substitution may lead to contamination or poor performance; use only DeVilbiss filter cartridges.
- The filter cartridge contains a hydrophobic filter. If the filter media becomes wet, air flow will be stopped. The filter cartridge must then be replaced. Do not remove filter media from filter cartridge.
- Filter cartridges are included with each disposable container.

Trouble Shooting

NOTE:

- Your DeVilbiss Suction Unit contains no user-serviceable parts. If you believe your unit is not working properly, before you return it please take a few moments to check for these possible causes:

PROBLEM:	ACTION:
Unit does not turn on, but green external power light is illuminated.	<ol style="list-style-type: none">1 Check power sources and connections.2 Ensure wall outlet is live by plugging in a lamp.3 If running from an internal battery, ensure that your unit has a battery installed.4 If battery is installed, check that it is fully charged.
Pump runs, but there is no vacuum.	<ol style="list-style-type: none">1 Check that all tubing is connected properly.2 Check tubing connections for breaks or leaks.3 Ensure that float shut-off is not activated.4 Check for leaks or cracks in container assembly.
Low vacuum.	<ol style="list-style-type: none">1 Use vacuum adjustment knob to increase vacuum level.2 Check system for leaks.3 Push vacuum adjustment knob in toward unit and then release.
Battery will not charge but charge light is illuminated.	<ol style="list-style-type: none">1 Ensure that unit is equipped with an internal battery by contacting your DeVilbiss equipment provider.2 Verify that charge light turns on.3 Check electrical connections during charging.4 Ensure wall outlet is live by plugging in a lamp.



14-18 Lovell Court,
Rosedale, Auckland 0632
P O Box 302-161
Albany, Auckland 0751
New Zealand
Telephone +64 9 415 3267
Fax +64 9 415 4004
Email: ebosakl@ebos.co.nz

108 Wrights Road
P O Box 411
Christchurch
New Zealand
Telephone +64 3 338-0999
Fax +64 3 339-5111
Email: ebos@ebos.co.nz

Internet: www.eboshealthcare.co.nz

Customer Service Freephone: 0800 733 633