

PARI FILTER VALVE SET

PARI RECOMMENDS USING THE PARI FILTER/VALVE SET FOR INHALING ANTIBIOTICS.

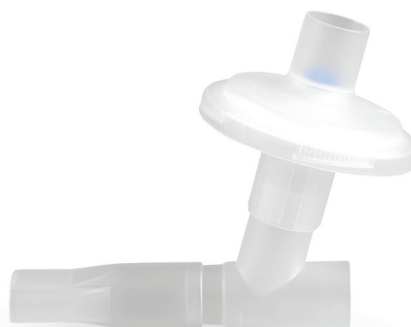
This prevents contamination of the environment by the patient's exhaled air. The PARI Filter/Valve Set should generally be used for inhalation therapy that uses medication which may be hazardous to health if inhaled constantly, e.g., by nursing staff in the hospital or in a doctor's practice.

Suitable for all PARI nebulisers, includes Mouthpiece (without expiratory valve), Y-Piece and Exhalation Filter, with expiratory valve

- Prevents inhaled medication reaching ambient air on expiration
- Indirectly protects those involved in inhalation, e.g. members of the family and nursing staff, from excess aerosol
- Particularly important for the inhalation of antibiotics, steroids and antimycotics
- The integrated valve system guarantees efficient inhalation therapy
- The filter pad is easy to change

Cleaning the PARI Filter/Valve set is easy. It can be:

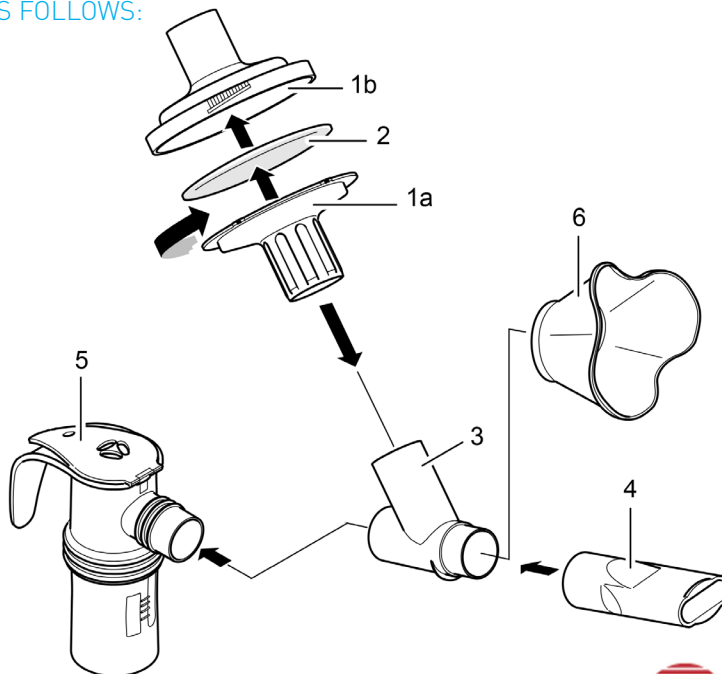
- Washed in a dishwasher
- Disinfected by boiling
- Chemically disinfected
- Autoclaved



EBOS Code: 22145005

THE PARI FILTER/VALVE SET IS ASSEMBLED AS FOLLOWS:

- Place a filter pad (2) in the exhalation filter upper part (1b).
- Insert the exhalation filter lower part (1a) in the exhalation filter upper part with the snap locks in the holes provided.
- Close the exhalation filter by turning its lower part clockwise as far as it will go.
- Insert the Y-connection (3) in the exhalation filter and on the nebuliser (5).
- Insert the mouthpiece without the expiratory valve (4) or BABY mask (6) onto the free end of the Y-connection.
- Connect the inspiratory valve to the nebuliser (5) e.g., PARI LC Sprint.



Specialists in effective Inhalation **PARI**

EBOS
HEALTHCARE