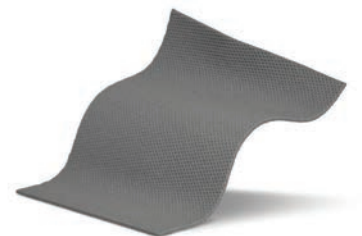




Introducing Mepilex® Transfer Ag It all adds up to undisturbed healing

Antimicrobial wound contact layer with Safetac® technology



Mepilex Transfer Ag

Help the body heal

The importance of less pain

The body has the ability to heal its wounds and a dressing can either disturb or support. Mölnlycke Health Care invented Safetac® in order to take the unnecessary suffering out of wound dressing changes.

Research shows that pain causes stress and that stress delays healing¹. The longer the wound takes to heal, the longer the treatment will last – which can mean greater pain and discomfort for patients, as well as extra costs².

Since the launch of Safetac, over 1 billion dressings with Safetac have helped millions of patients to less painful wound healing.

Why we developed Mepilex Transfer Ag

Mepilex® Transfer Ag has been designed for healthcare professionals and for patients. As a wound contact layer it gives flexibility to construct the optimal dressing combination to fit a wound type or exudate level.

Our customers asked us for:

A dressing with Safetac to minimise pain and suffering

- Gentle adherence to the surrounding skin without sticking to the wound
- Minimal damage to the wound or skin during dressing changes

A dressing that fits

- Conforming to difficult-to-dress areas

A dressing to manage exudate

- Transferring exudate away to a secondary layer

A dressing to combat infection

- With a rapid and sustained antimicrobial effect

A dressing to promote undisturbed healing

- A dressing you can leave in place for several days so that the body can heal the wound

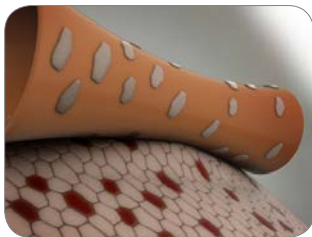


“During the years I have seen that infection can cause a lot of pain and distress in itself, in addition to the pain from the dressing changes. I came in contact with Mölnlycke Health Care and I clearly saw the difference that Safetac dressings can make to patients. It’s a quality mark for me.”

Åsa Odhagen-Rosvall, RN, Biologist
Product Designer
Mölnlycke Health Care, Göteborg, Sweden

Choose Safetac for all the right reasons

Safetac dressings are clinically proven to hurt less³. That means less stress⁴ and fewer disturbances to the wound. Which can mean faster healing¹ and resulting lower costs².



Traditional adhesives only adhere to the top of skin pores, and must stick harder to stay in place.



Safetac conforms to the skin's pores, sealing the wound edges.

Safetac dressings prevent needless suffering.

Too many patients still suffer too much during wound care. It hurts them physically, it pains them psychologically. We believe this is wrong. Safetac was developed to free patients from unnecessary suffering during their wound healing journey.

Less damage

- Safetac minimises risk of wound adherence⁵
- Safetac minimises risk of skin stripping^{6,7}
- Safetac minimises risk of maceration^{8,9,10}

Less pain

- Safetac is clinically proven to minimise pain³

Optimised healing

- Safetac minimises skin and wound damage⁵⁻¹⁰
- Skin and wound damage causes pain
- Pain causes stress and stress delays healing¹
- Safetac minimises pain³ and reduces stress⁴

Lower costs

- Optimised healing can mean fewer dressing changes.
- Less pain leads to less anxiety and pain medication²
- Less staff time required for treatment

Safetac[®]
TECHNOLOGY

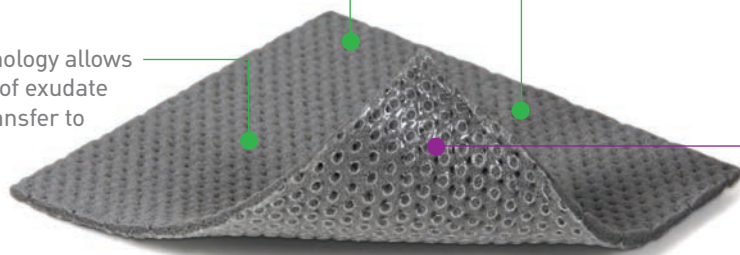
Mepilex Transfer Ag

A Safetac wound contact layer with antimicrobial effect

Mepilex Transfer Ag is designed to meet the challenge of low to high exuding wounds where there's a risk of infection. A wound contact layer which manages and transfers exudate – with antimicrobial effect and our patented Safetac technology to minimise patient pain, Mepilex Transfer Ag promotes undisturbed healing.

Contains silver sulphate.

The foam technology allows the absorption of exudate and enables transfer to a second layer.



No backing film enables exudate transfer into a second layer that can be changed frequently while you leave Mepilex Transfer Ag in place for up to 14 days.

Safetac technology supporting less painful healing.

Safetac
TECHNOLOGY

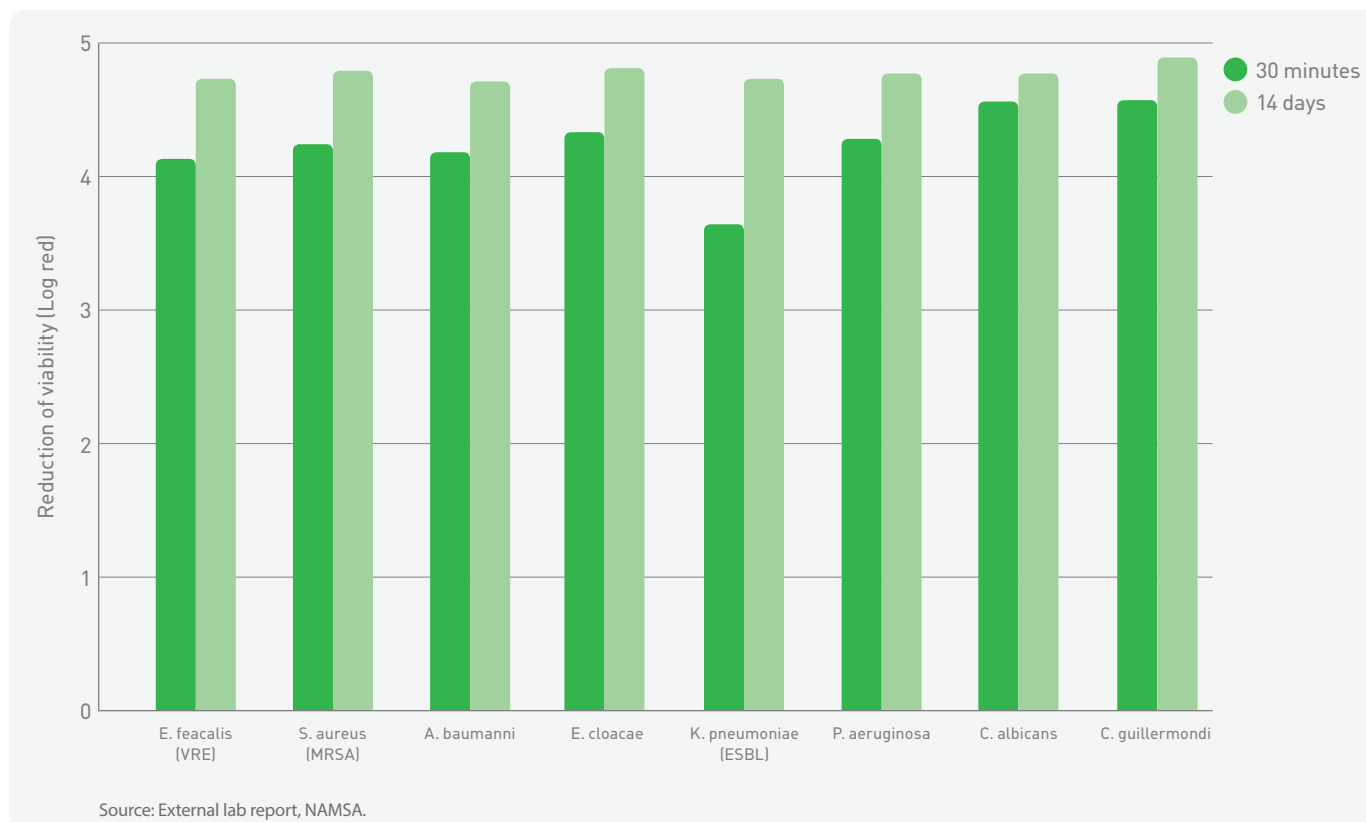
Where to use it

Mepilex Transfer Ag can be used on partial thickness burns, foot and leg ulcers, pressure injuries, donor sites (surgical wounds), and malignant wounds.

Mepilex Transfer Ag

An effective bacterial barrier

Mepilex Transfer Ag prevents and minimises microbial growth, even in combination with a secondary layer¹¹. It has shown a rapid effect within 30 minutes¹², and a sustained silver release and antimicrobial effect for up to 14 days¹³. By reducing the number of micro-organisms it may also reduce odour for better quality of life.



Our patented Safetac® technology

With Safetac, Mepilex Transfer Ag will not stick to the wound. It protects the wound edge from maceration and minimises skin stripping at removal.

With less damage to the wound and skin, the dressing can be removed with minimised pain. It gently adheres to dry skin, remaining in place during application and wear.

Rapid and sustained antimicrobial effect

Mepilex Transfer Ag inactivates microbes within 30 minutes and keeps on working for up to 14 days, when needed, minimising the frequency of dressing changes. When the dressing comes in contact with wound fluid, it releases silver ions to create an effective bacterial barrier and to inactivate a broad range of wound-related pathogens like bacteria and fungi.

It has also shown to keep its antimicrobial effect, even with the secondary layer in place. In addition, by reducing the number of micro-organisms, Mepilex Transfer Ag may reduce odour.

Exudate management

Wounds differ and a dressing should be able to manage different levels of exudate, from low to high. The foam technology in Mepilex Transfer Ag absorbs exudate and moves it away from the wound.

There's no backing film, enabling the exudate to be moved to a secondary absorbent layer – which you can change as frequently as you need. And because the primary layer doesn't have to be changed too frequently the disturbance to the wound during the healing process is minimised. Thanks to the flexible foam, Mepilex Transfer Ag is soft and conformable to wear.

It all adds up to undisturbed healing

Mepilex Transfer Ag is a “multi-tasking” wound contact layer that supports the body in wound healing. Because all wounds are different, there is a range of different sizes.

Together with appropriate top layers, you can create a dressing to do the right job for that very wound or patient – also on difficult-to-dress areas.

LESS PAINFUL HEALING



ANTIMICROBIAL

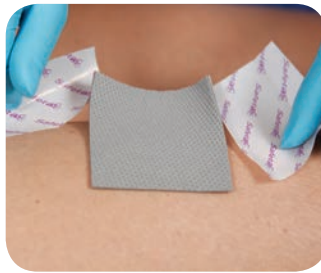


EXUDATE MANAGEMENT

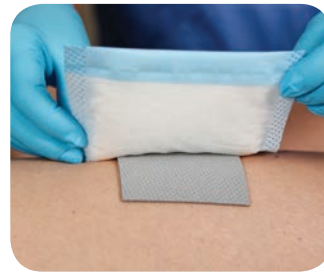
How to use Mepilex Transfer Ag



1 Preparation
Cleanse the wound and dry the surrounding skin thoroughly. If needed, cut Mepilex Transfer Ag to appropriate size or shape.



2 Apply Mepilex Transfer Ag
Remove the release film, and apply the adherent side to the wound allowing at least 2-5 cm overlap on dry skin. Do not stretch. Smooth.



3 Apply secondary layer
Apply a secondary layer that is appropriate for the exudate level. Overlap the edges of Mepilex Transfer Ag.



4 Apply fixation
Use an appropriate fixation to hold the dressings in place, e.g. Tubifast.

Frequency of change

Mepilex Transfer Ag may be left in place for up to 14 days depending on the patient, condition of the wound and surrounding skin, or as indicated by accepted clinical practice. It is intended for short-term use up to 4 weeks. For continued use, a re-assessment by a physician is recommended.

Ordering information

ART. NO	SIZE CM	PC/SHELF	PC/TRP
394000	7.5 x 8.5	10	70
394100	10 x 12.5	5	50
394700	12.5 x 12.5	5	50
394800	15 x 20	10	50
394500	20 x 50	2	12



References

1. Upton D. et al. Pain and stress as contributors to delayed wound healing. Wound Practice and Research, 2010.
2. Butcher M. et al. Quantifying the financial impact of pain at dressing change. Psychological impact of pain in patients with wounds. Wounds UK, 2011.
3. White R. A multinational survey of the assessment of pain when removing dressings. Wounds UK, 2008.
4. Upton D. et al. The Impact of Atraumatic Vs Conventional Dressings on Pain and Stress in Patients with Chronic Wounds. Submitted and approved for publication. Journal of Wound Care, 2012.
5. White R. et al. Evidence for atraumatic soft silicone wound dressing use. Wounds UK, 2005.
6. Waring P. et al. An evaluation of the skin stripping of wound dressing adhesives. Journal of Wound Care, 2011.
7. Dykes P.J. et al. Effect of adhesive dressings on the stratum corneum of the skin. Journal of Wound Care, 2004.
8. Meaume S. et al. A study to compare a new self adherent soft silicone dressing with a self adherent polymer dressing in stage II pressure ulcers. Ostomy Wound Management, 2003.
9. Feili F. et al. Retention capacity. Poster presentation at the EWMA conference, Lisbon, Portugal, 2008.
10. Wiberg A.B. et al. Preventing maceration with a soft silicone dressing: in-vitro evaluations. Poster presented at the 3rd Congress of the WUWHWS, Toronto, Canada, 2008.
11. Data on file.
12. External lab report, NAMSA.
13. External lab report, NAMSA.

www.molnlycke.com

The Mölnlycke Health Care name and logo, Mepilex® Transfer Ag and Safetac® are registered trademarks of Mölnlycke Health Care AB. © Copyright (2014) Mölnlycke Health Care. All rights reserved. Mölnlycke Health Care Pty Ltd, Suite 1.01, 10 Tilley Lane, Frenchs Forest NSW 2086. Phone 1800 005 231. www.molnlycke.com.au. New Zealand Orders & Enquiries 0800 005 231, www.molnlycke.co.nz 182455

